

Auto Tee™

Mechanical Engineering

Students: Isaac Wall, Cody Gomes, Ben Fixel, Freddy Cortes
Advisors: Dr. Maziar Ghazinejad

FRESNO STATE

Lyles College of Engineering

Abstract

The Auto-Tee™ is an automatic golf ball dispenser designed to place a golf ball on a tee. The Auto-Tee™ is designed to hold a standard large bucket of balls (around 100+ golf balls). The Auto-Tee™ also features a small insulated compartment able to hold a six pack of canned beverages with room for ice packs. The Auto-Tee™ also has slots for extra tees, adjustable legs, and slot for a cell phone that will amplify music. The arm will be detachable as well as the adjustable legs for easy storage. Access to the insulated compartment will be through a door opposite of the arm.



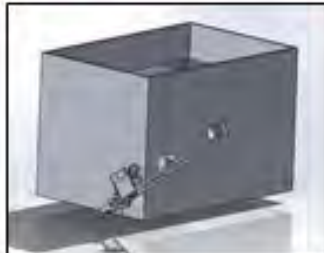
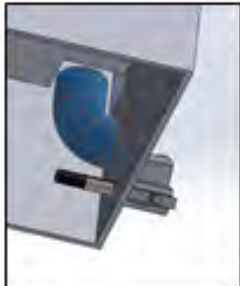
Function

- Dispenser height is set by adjusting the legs
- Golf balls are loaded into the dispenser
- Golf balls funnel to single outlet on the side
- One golf ball loads onto the arm
- Golf ball is dispensed when the arm is actuated by the golf club
- Weight of golf ball swings arm down to set it on the plastic tee

Prototype



SolidWorks Model



Features

- Low cost
- No electricity
- High capacity (100+ golf balls)
- Cooler compartment
- Easy carry
- Phone and tee slots
- Adjustable legs

