



RAILROAD MODEL COMPETITION



**UPPER ELEMENTARY SCHOOL
COST ESTIMATION GUIDE**

FRESNO  **STATE**®

Transportation Institute



RAILROAD MODEL COMPETITION

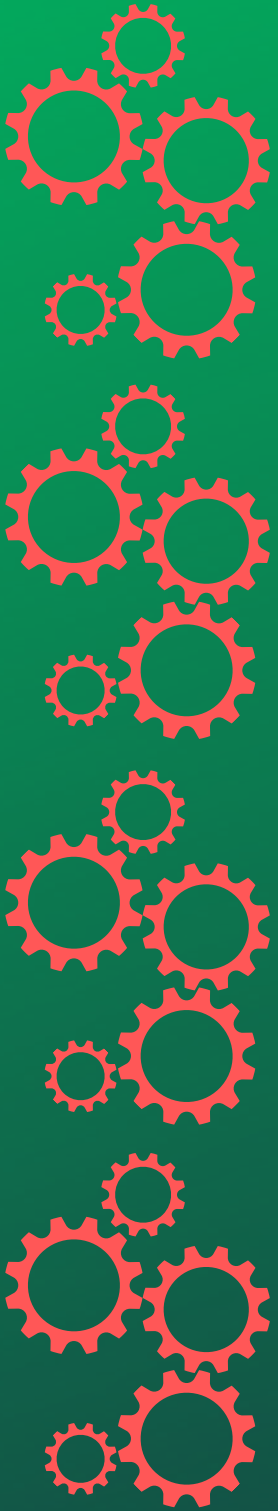
FRESNO STATE TRANSPORTATION INSTITUTE.....3

LAND COST.....4

CONSTRUCTION COST.....5

REVENUE.....7

CONTACT US.....8



FRESNO STATE TRANSPORTATION INSTITUTE

UES COST ESTIMATION GUIDE

Created in 2017 to advance transportation sciences in Fresno County, the Institute results from a unique collaboration between the California State University, City of Fresno and the Fresno Council of Governments and funded through Fresno County's Measure C New Technology Reserve Fund.

In accordance with the Regional Transportation Plan and Sustainable Community Strategy, the Institute has the mission of instigating and developing transportation projects in the following areas:

Education: through courses, training, workshops, and conferences, the Institute seeks to develop and offer advanced education programs to create a skilled workforce that can potentially advance the city and regional transportation planning and other transportation-related fields.

Outreach: to better educate about the importance of local transportation solutions and increase the acceptance for advanced transportation projects in the Fresno County, the Institute organizes games, competitions and other events aimed at K-12 students and the general public.

Research: through the collaboration with graduate and undergraduate programs at Fresno State and other academic partners across the Central Valley, the Institute incentivize research projects that seek solutions to the unique transportation challenges faced by Fresno County and its neighbors, such as reduced mobility, poor air quality, traffic congestion, and high energy demand.

Technical Service: to facilitate the pursuit of transportation-related projects by local agencies and firms, the Institute provides resources and technical expertise to help its partner organizations prepare and submit proposals for obtaining project grants and other funding.

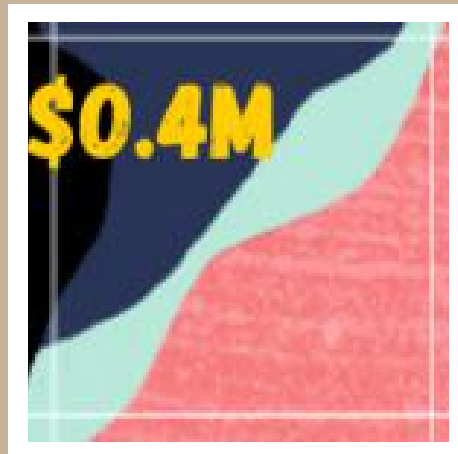
FRESNO STATE

Transportation Institute

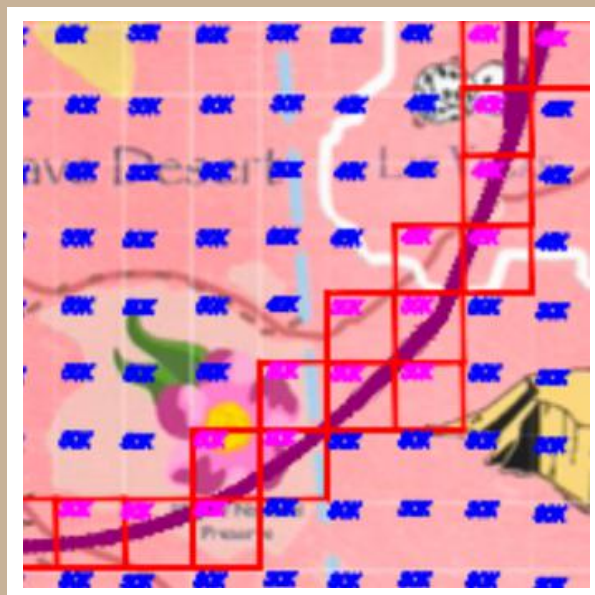


► Land Costs

Once you finish making the railroad track, we will add up the costs of each square of land used. For example, each square will have a price in the top left corner, as shown below.

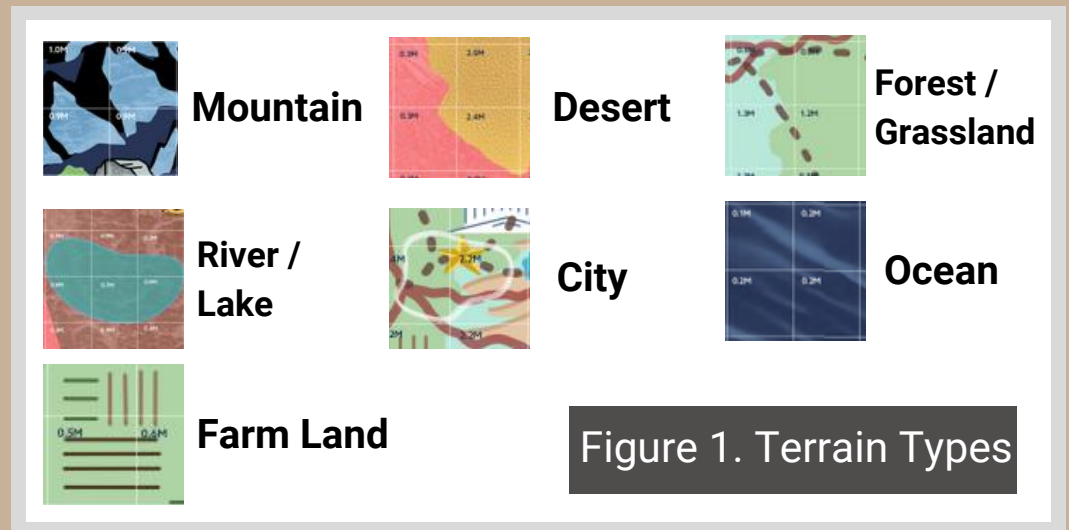


Remember, even if a little bit of the railroad touches the square, we will still consider it.



Construction Costs

After figuring out our land cost, we will move on to the construction cost, depending on the terrain. To find out how long we are making the tracks, we will use a piece of string to measure the length of each part. There will be different terrains, such as:



From these terrains, we can find the costs for each piece.

	FOREST	CITY	FARM LAND	DESERT	MOUNTAIN	RIVER	OCEAN
CONSTRUCTION	\$4.0 M	\$3.5 M	\$2.0 M	\$1.5 M	\$6.0 M	\$5.0 M	\$12.0 M

Table 1: Construction Cost

Keep in mind that these costs are per mile (1" on the map equals 7 miles in reality).

► Construction Cost Example

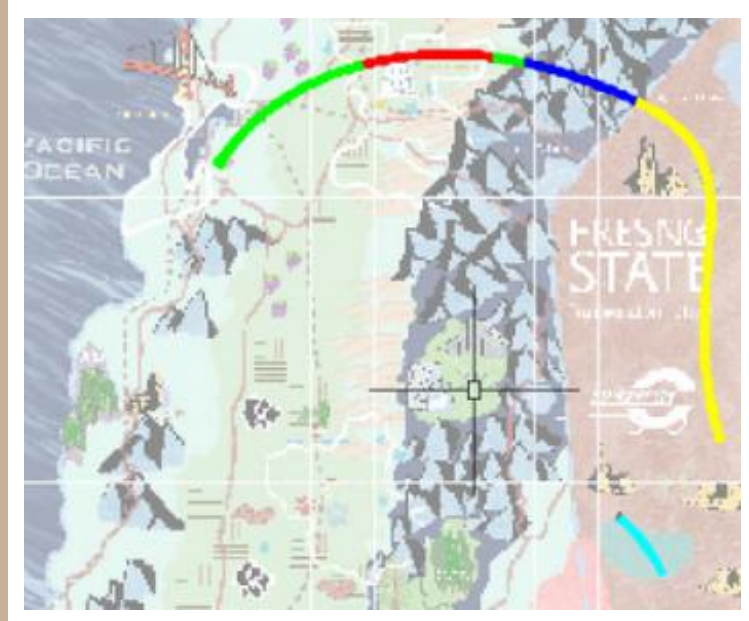


Figure 2: Terrain Sections

Let's say we measured 11.6" of forest for the first section in **Figure 2**. After, look at **Table 1** and locate where the forest and construction column is. Based on the table, we can see that the cost per mile of forest construction is \$4.0 Million. **Remember that 1" is equivalent to 7 miles**, so we would have first to take our measure value of 11.6" and **multiply** it by 7. This will give us 81.2 miles for that section. We will **multiply** 81.2 miles by \$4.0 Million to get our construction cost. This is about \$324.8 Million for the first section.

(Inches of the Section x 7 miles) x Construction Cost = Construction Cost of the Section

After each section has been calculated, we will take the sum of all section costs to get our total construction cost.

► Operation Costs

Create a timetable schedule showing how your trains will operate. Complete the timetable itinerary in the best way to maximize the total revenue and minimize the total costs.

You will then be tasked to do a Time Schedule Table as shown below:

Time Schedule Table					
Departure City	Arrival City	Departure	Arrival	Waiting Time	Revenue/Profit
Las Vegas	Los Angeles	0:00:00	0:00:11	0:00:15	128000
Los Angeles	Fresno	0:00:26	0:00:35	0:00:15	120000

Table 2: Time Schedule Table

Your system must operate for a total duration of 4 minutes, with a mandatory stop of 15 seconds in each station.

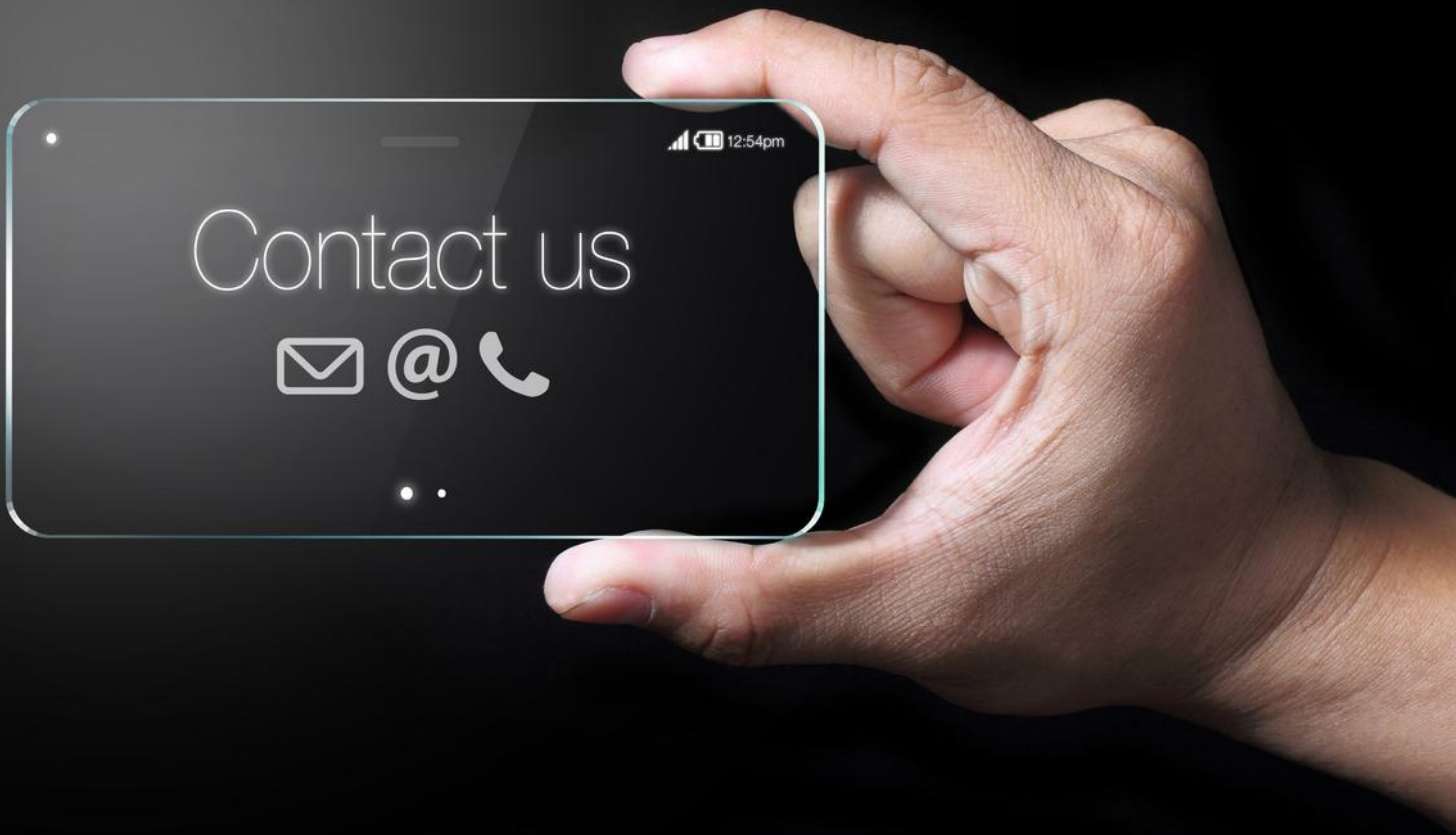


➤ Revenue

Table 3 will give you the revenue for each trip based on the locations our train travels. For example, if our train goes from Fresno to Sacramento without any stops in between, we will earn \$104K. Depending on the cities we have chosen to stop at, we will sum up all the track revenue costs between each proposed station to determine the total revenue.

	FRESNO	LAS VEGAS	LOS ANGELES	SACRAMENTO	SAN FRANCISCO
FRESNO	\$0K	\$136K	\$120K	\$104K	\$112K
LAS VEGAS	\$136K	\$0K	\$128K	\$184K	\$200K
LOS ANGELES	\$120K	\$128K	\$0K	\$165K	\$144K
SACRAMENTO	\$104K	\$184K	\$165K	\$0K	\$92K
SAN FRANCISCO	\$112K	\$200K	\$144K	\$92K	\$0K

Table 3: Revenue Matrix



Email Address

FSTI@mail.fresnostate.edu

Phone Number

(559) 278-6096

Mailing Address

Fresno State Transportation Institute
Lyles College of Engineering
California State University, Fresno
2320 E. San Ramon Ave (M/S EE94)
Fresno, CA 93740

Thank You to our Sponsors!



CALIFORNIA
High-Speed Rail Authority



FRESNO STATE

Transportation Institute

