

## **INTERSECTION SAFETY AND MANAGEMENT**

### **OVERVIEW**

**DURATION:** 45 – 50 MINUTES

**CATEGORY:** TRANSPORTATION

**NUMBER OF STUDENTS:** 30 IN EACH SESSION APPROXIMATELY

**ENRICHMENT COMPONENTS:** D.I.Y., STEAM, TRANSPORTATION, ENGINEERING

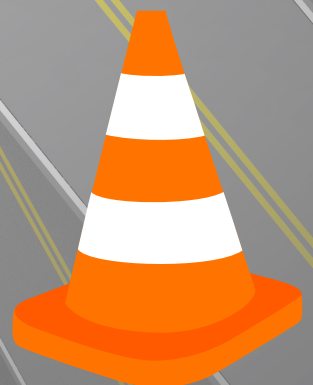
**QUALITY STANDARDS:** CALIFORNIA STANDARDS OF LEARNING

### **LEARNING OBJECTIVE**

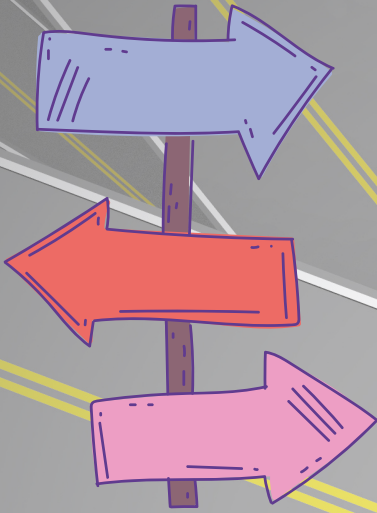
STUDENTS WILL LEARN ABOUT THE VARIOUS TRAFFIC CONTROL DEVICES (TCDS), THEIR IMPLICATIONS, AND THEIR IMPORTANCE. ALSO, THEY WILL BE AWARE OF HOW THEY CAN USE TCDS IN THEIR DAILY LIFE TO AVOID ANY CRITICAL SITUATIONS.

### **ENGINEERING VOCABULARY**

- **Traffic Control Devices - TCDs:** TCDs are signs, signals, pavement markings that are placed along highways, roads, and streets to assist the safe and efficient movement of vehicles and people. These devices are installed in strategic locations to direct and manage the flow of traffic, control vehicle speeds, and alert drivers to any potentially hazardous situations.
- **Road Intersection:** The location or point where two or more roads meet or cross is known as an intersection. An intersection includes areas required for all types of transportation, such as pedestrian, bicycle, motor vehicle, and public transportation.
- **Traffic Signs & Signals:** a set of posters by roadside or signals that automatically operate by colored lights, typically red, yellow, and green, for controlling traffic at road junctions and crosswalks so that there is no accident, and everyone can be safe and sound.
- **Intersection:** Crossroads, or where two roads intersect or meet with each other.



## **INTERSECTION SAFETY AND MANAGEMENT**



### **STEPS FOR THE ACTIVITY**

1. FSTI team members introduction.
2. Dividing students into equal groups.
3. Pre-Assessment forms distribution.
4. KWL Chart about various TCDs.
5. YouTube video (optional). [Link](#)
6. Knowing the different types of TCDs – Regulatory, Warning, and Guidance.
7. Distributing the various charts for placing the model TCDs to each group. Each group will be given sufficient TCD models to place over the charts to the best of their understanding.
8. BINGO Charts / Red Signal – Green Signal Game.
9. Giveaway to the students on successful completion of the activity.
10. Completion survey and post-activity assessment for the students and the teachers.

### **DISCUSSION/ENGAGEMENT QUESTIONNAIRE**

- What **I know** about TCD's
- What **I want to know** about TCD's
- What **I learned** from the session

by asking questions such as

- How are roads designed?
- What do you see at various signals?
- What are the different traffic signs and symbols that you remember?
- What is an intersection? How is it different from the middle of the road?
- How are TCDs different from Traffic Symbols?
- Why are traffic symbols red, yellow, and green, and not any other color?
- Difference between regulatory, warning, and guide signs?
- Which TCDs are you most familiar with and why?



### **SOCIAL EMOTIONAL LEARNING**

- **Growth Mindset:** Young people believe that they can, through their efforts, grow in their intelligence and abilities.
- **Self-Awareness:** Young people can recognize and understand their identity and feelings.
- **Interpersonal Skills:** Young people use effective communication and collaboration skills to establish and maintain positive and productive relationships.
- **Social Awareness:** Young people have the capacity for empathy, can consider and appreciate the diverse feelings, perspectives, and personal contexts of others.